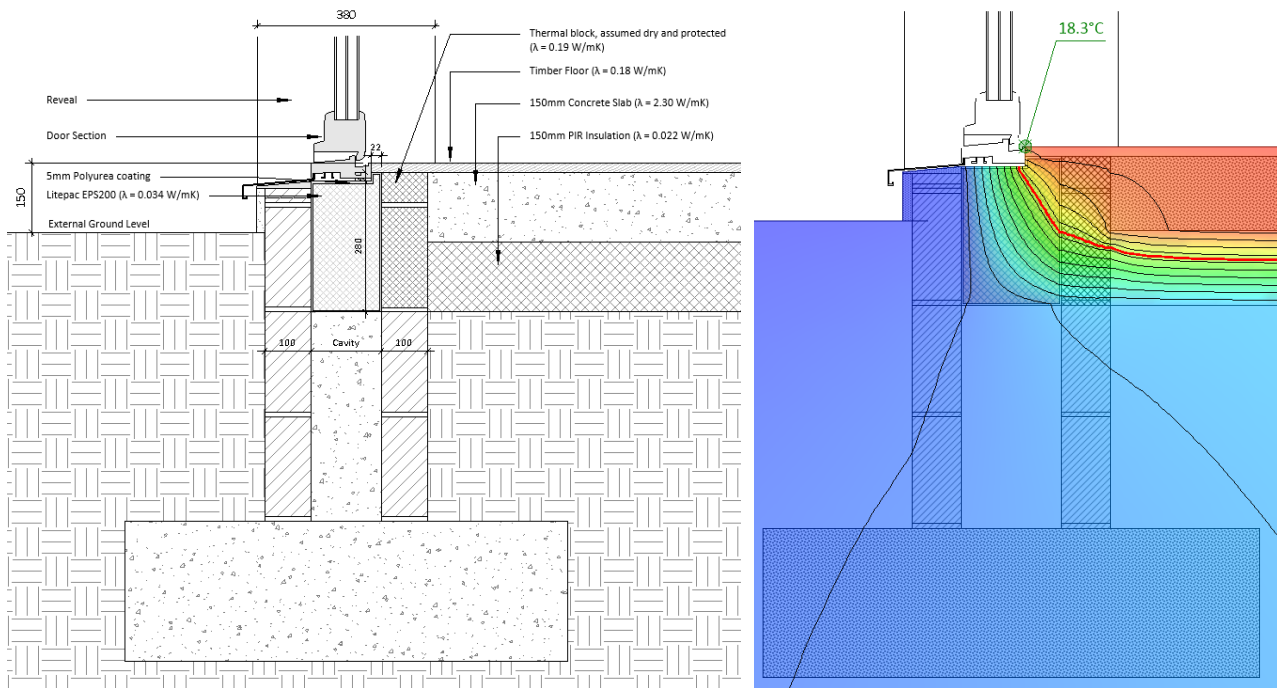




REF. No.:	DESCRIPTION
PS-06	Threshold Detail with Passive Sill Threshold (150mm and 200mm Cavity)



**ACCREDITED VALUES**

	$\Psi$ -value (W/mK)	Temperature factor (fRsi)
Passive Sills (150mm Cavity)	+0.110	0.91
Passive Sills (200mm Cavity)	+0.107	0.92

**NOTES**

**DISCLAIMER**

All comments/details provided only concern the thermal performance of the junction ONLY in relation to the details shown. No account is taken for the performance of the building/junction in terms of all Building Regulations, water penetration, weathering, air tightness, structural performance, aesthetics, durability, warranties or guarantees. The Psi ( $\Psi$ ) values stated may only be used where the wall constructions meet the performance criteria highlighted.

\*Floor calculated in accordance with ISO13370 default values