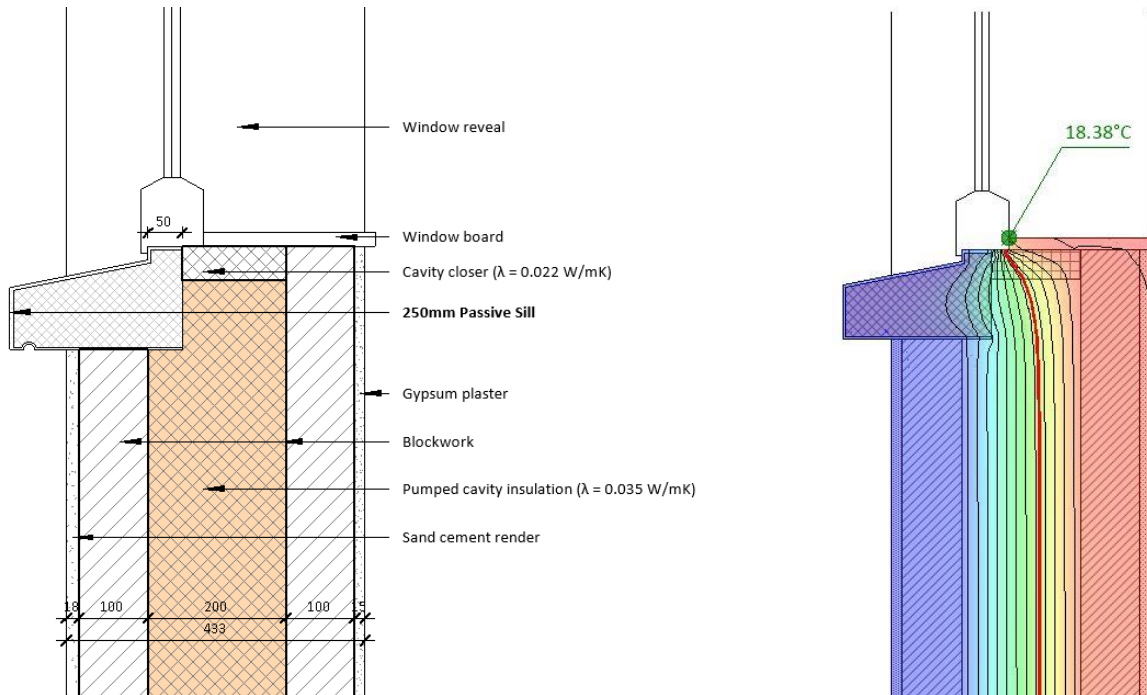




REF. No.: **DESCRIPTION**

PS-08 200mm pumped cavity insulation with 250mm Passive Sill.
 Wall U-value = 0.16 W/m²K



ACCREDITED VALUES

	Ψ-value (W/mK)	Temperature factor (fRsi)
Acceptable Construction Details	+0.019	-
Concrete Sill	+0.018	0.90
Passive Sills	+0.005	0.92

NOTES

DISCLAIMER

All comments/details provided only concern the thermal performance of the junction ONLY in relation to the details shown. No account is taken for the performance of the building/junction in terms of all Building Regulations, water penetration, weathering, air tightness, structural performance, aesthetics, durability, warranties or guarantees. The Psi (Ψ) values stated may only be used where the wall constructions meet the performance criteria highlighted.